



MAP NOTES

GENERAL NOTES

Invasive species will be targeted throughout the project areas. Both woody and herbaceous species are present and will be treated with targeted methods.

INITIAL REMOVAL

Initial removal designation is for areas with existing invasive species present. These areas will be treated initially, then monitored for re-growth throughout the duration of the project. Re-growth will be treated the following season during the period of establishment.

ESTABLISHMENT TREATMENTS

Establishment treatments are primarily for areas being converted from lawn to meadow. These treatments will take place during the period of establishment phase and target any invasive species trying to establish within the new meadow footprint.

WOODY SPECIES TREATMENT

Woody species treatments will involve a cut stump treatment, with the stem or trunk being cut and an application of herbicide applied to the stump. Cut material will be chipped and disposed of off-site.

HERBACEOUS SPECIES TREATMENT

Herbaceous species will be treated using a targeted hand wicking or clip n drip approach.

AREA A

Area A includes an initial treatment area. This area has both woody and herbaceous invasive species present, including *Alnus glutinosa*, *Phragmites australis*, *Morus alba*, *Rhamnus cathartica*, *Lonicera* spp. and *Rosa multiflora*. The total area for initial removal in area A is 0.31 acres.

AREA B

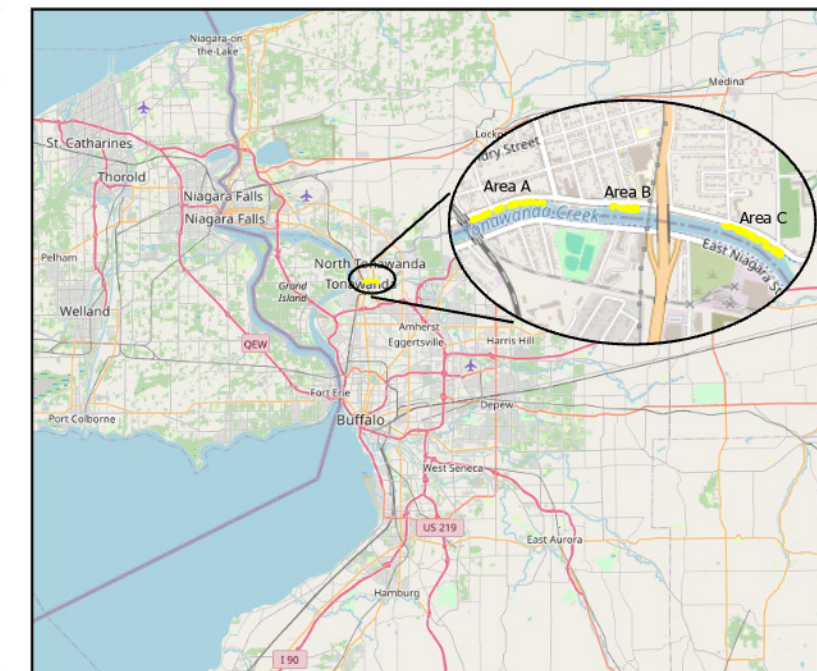
Area B includes both initial and establishment treatment areas. Some woody and herbaceous species are currently present within the initial treatment area, including *Alnus glutinosa* and *Cirsium arvense*. The total area for initial removal in area B is 0.09 acres, with the establishment area at 0.10 acres.

KEY

Project Area

Establishment Treatments

Initial Removal



Tonawanda Creek Riparian Improvements

Invasive Species - Areas A & B

Buffalo Niagara Waterkeeper
721 Main Street
Buffalo, NY 14203



DATE	JANUARY 2026
SHEET #	1 OF 5
SHEET TITLE	TONAWANDA CREEK RIPARIAN IMPROVEMENTS - INVASIVES

Area C



MAP NOTES

GENERAL NOTES

Invasive species will be targeted throughout the project areas. Both woody and herbaceous species are present and will be treated with targeted methods.

INITIAL REMOVAL

Initial removal designation is for areas with existing invasive species present. These areas will be treated initially, then monitored for re-growth throughout the duration of the project. Re-growth will be treated the following season during the period of establishment.

ESTABLISHMENT TREATMENTS

Establishment treatments are primarily for areas being converted from lawn to meadow. These treatments will take place during the period of establishment phase and target any invasive species trying to establish within the new meadow footprint.

WOODY SPECIES TREATMENT

Woody species treatments will involve a cut stump treatment, with the stem or trunk being cut and an application of herbicide applied to the stump. Cut material will be chipped and disposed of off-site.

HERBACEOUS SPECIES TREATMENT

Herbaceous species will be treated using a targeted hand wicking or clip n drip approach.

AREA C

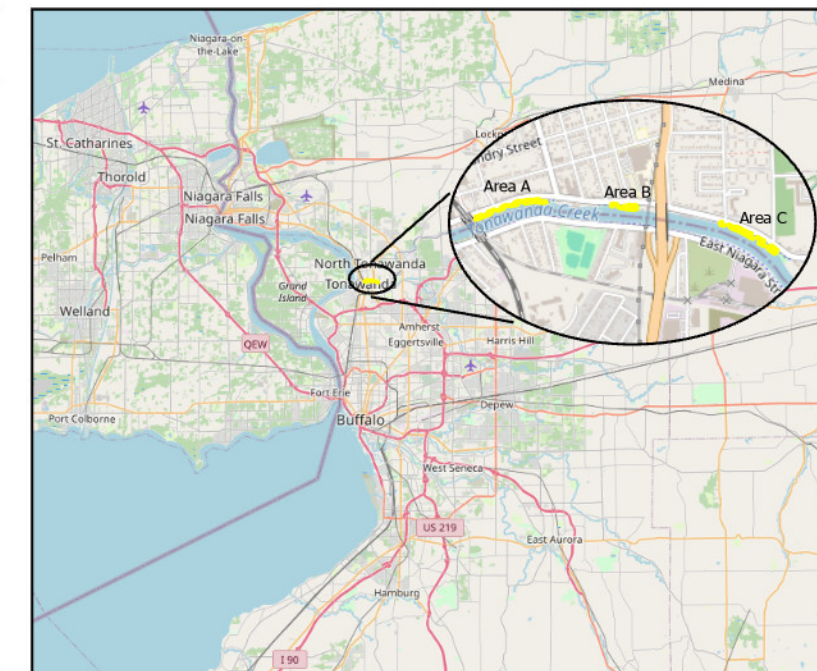
Area C includes an initial treatment and establishment treatment areas. This area has both woody and herbaceous invasive species present, including *Alnus glutinosa* and *Phragmites australis*. The *Phragmites* are prolific in dense monocultures throughout the initial removal footprint of area C. The total area for initial removal in area C is 0.25 acres, with the establishment area at 0.33 acres.

KEY

Project Area

Establishment Treatments

Initial Removal



Tonawanda Creek Riparian Improvements

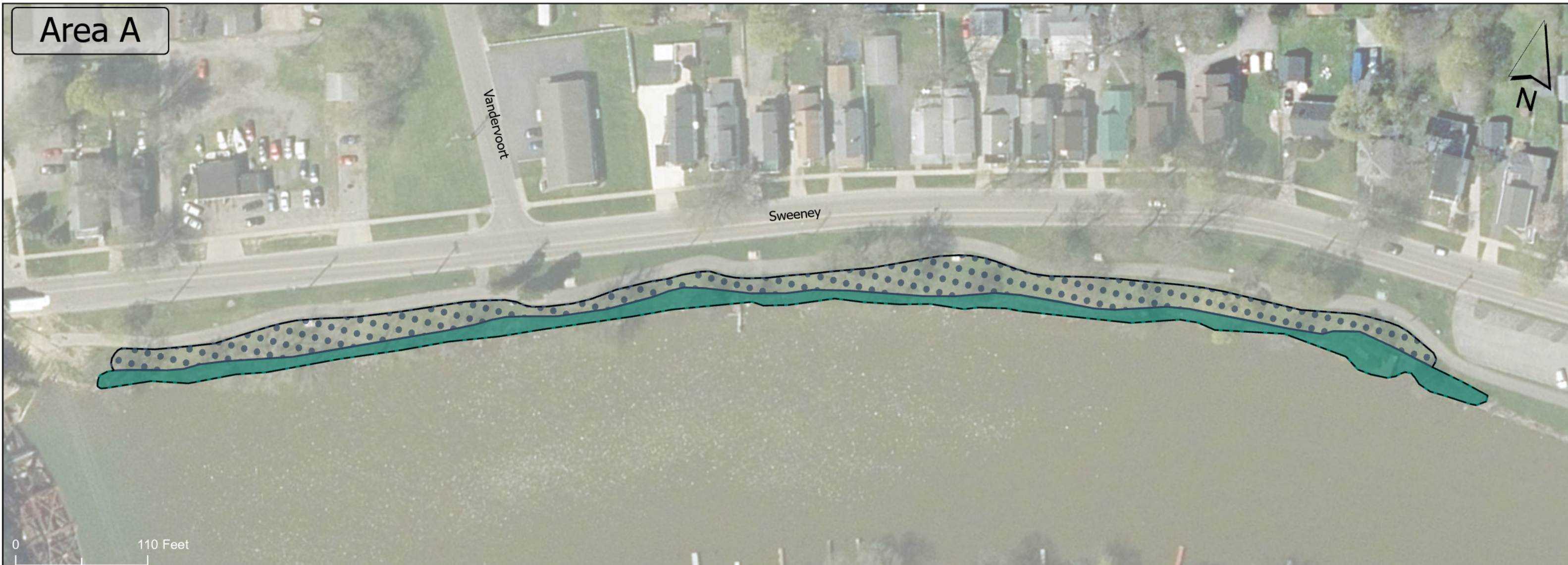
Invasive Species - Area C

Buffalo Niagara Waterkeeper
721 Main Street
Buffalo, NY 14203



DATE	JANUARY 2026
SHEET #	2 OF 5
SHEET TITLE	TONAWANDA CREEK RIPARIAN IMPROVEMENTS - INVASIVES

Area A



MAP NOTES

RIPARIAN SLOPE PLANTING

The riparian slope planting is used along the shoreline of Area A. After invasive species removal, remaining invasive species debris will be cleared and chipped to create space for plantings. Shrubs will be planted along the shoreline targeting areas of bare soil to increase slope stability and species diversity. Herbaceous plugs will be used to fill previous areas of Phragmites monocultures. Shrub stock will consist of live stakes and #3 containers, with live stakes being used throughout while container stock will be used on flatter sections of the slope where successful planting can be achieved.

TREE PLANTING

Tree plantings will occur throughout all three project areas to establish park trees and additional canopy throughout the project. The trees planted will be native bare-root or #7 container trees. 10 trees will be planted throughout this zone of area A, along the existing trail.


AREA A

The total size of area A is 0.8 acres.

KEY

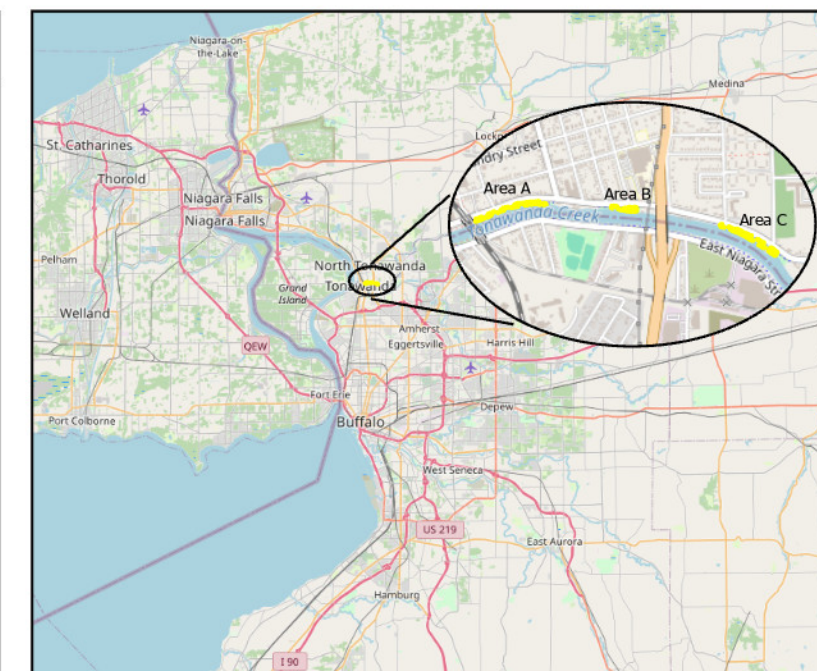
Planting Zones

 Riparian Slope Planting

 Tree Planting

Other Features

 Project Area



Tonawanda Creek Riparian Improvements

Site Plan - Area A

Buffalo Niagara Waterkeeper
721 Main Street
Buffalo, NY 14203



DATE	JANUARY 2026
SHEET #	3 OF 5
SHEET TITLE	TONAWANDA CREEK RIPARIAN IMPROVEMENTS - SITE PLAN

Area B



MAP NOTES

SUPPLEMENTAL PLANTINGS

Supplemental plantings will infill areas previously occupied by invasive species in order to provide groundcover and close newly opened patches. These plantings will consist of native herbaceous plugs of grasses and flowering plants.

MEADOW ESTABLISHMENT

Meadow establishment plantings will consist of initially removing the turfgrass present with the zones, followed by dense plug plantings of native grasses and flowering plants in order to create a native meadow.

TREE PLANTING

Tree plantings will occur throughout all three project areas to establish park trees and additional canopy throughout the project. The trees planted will be native bare-root or #7 container trees. 5 park trees will be planting within this zone.

PROJECT AREA

Outer limits of the project.

SPLIT RAIL FENCE

A wooden split rail fence, with posts 6 feet apart.

SIGNAGE LOCATIONS

One 36"x24" interpretative signs will be installed in Area B.

AREA B

The total size of area B is 0.43 acres.

KEY

Planting Zones

 Supplemental Plantings

 Meadow Establishment

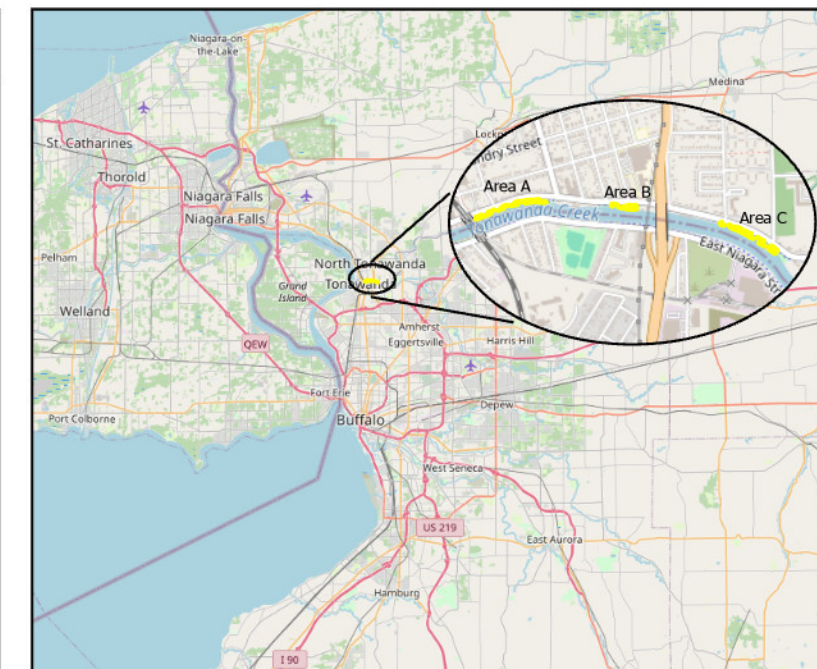
 Tree Planting

Other Features

 Project Area

 Split Rail Fence

 Signage Locations



Tonawanda Creek Riparian Improvements

Site Plan - Area B

Buffalo Niagara Waterkeeper
721 Main Street
Buffalo, NY 14203



DATE	JANUARY 2026
SHEET #	4 OF 5
SHEET TITLE	TONAWANDA CREEK RIPARIAN IMPROVEMENTS - SITE PLAN

Area C



MAP NOTES

SUPPLEMENTAL PLANTINGS

Supplemental plantings will infill areas previously occupied by invasive species in order to provide groundcover and close newly opened patches. These plantings will consist of native herbaceous plugs of grasses and flowering plants.

MEADOW ESTABLISHMENT

Meadow establishment plantings will consist of initially removing the turfgrass present with the zones, followed by dense plug plantings of native grasses and flowering plants in order to create a native meadow.

RIPARIAN REFORESTATION

This planting type will consist of both densely planted herbaceous native plugs and containerized native trees and shrubs (#3-#7). The turfgrass will initially be removed, followed by the container stock and plugs. Roughly 150 trees and shrubs will be planted in this area.

FENCED EMERGENT PLANTING

Fenced emergent plantings are used in Area C. This type consists of the establishment of aquatic wildlife deterring fencing, set up in nodes of 50'x10'. The nodes will be placed within the water, right at the edge where the shoreline stops and will be planted with emergent vegetation, using rocksocks.

TREE PLANTING

Tree plantings will occur throughout all three project areas to establish park trees and additional canopy throughout the project. The trees planted will be native bare-root or #7 container trees. A total of 10 trees will be planted throughout this zone of Area C.

PROJECT AREA

Outer limits of the project.

MOWED PATH

A mowed path will be maintained to the fishing access points, providing access.

SIGNAGE LOCATIONS

One 36"x24" interpretative sign will be installed in area C.

FISHING ACCESS POINT

The access feature will consist of a layered stone assembly constructed over nonwoven geotextile fabric, including a compacted aggregate base (e.g., crusher run), a washed angular gravel setting bed, and installed limestone stackers. Washed angular gravel will be used as joint stone between stackers and to fill voids within the setting bed to provide stability. A surge stone or light riprap collar will be installed along three sides of the feature nearest the water's edge to provide edge containment and scour protection. Along the upland edge, metal edging is incorporated to contain gravel materials and ensure long-term stability.

AREA C

The total size of area C is 1.0 acre.

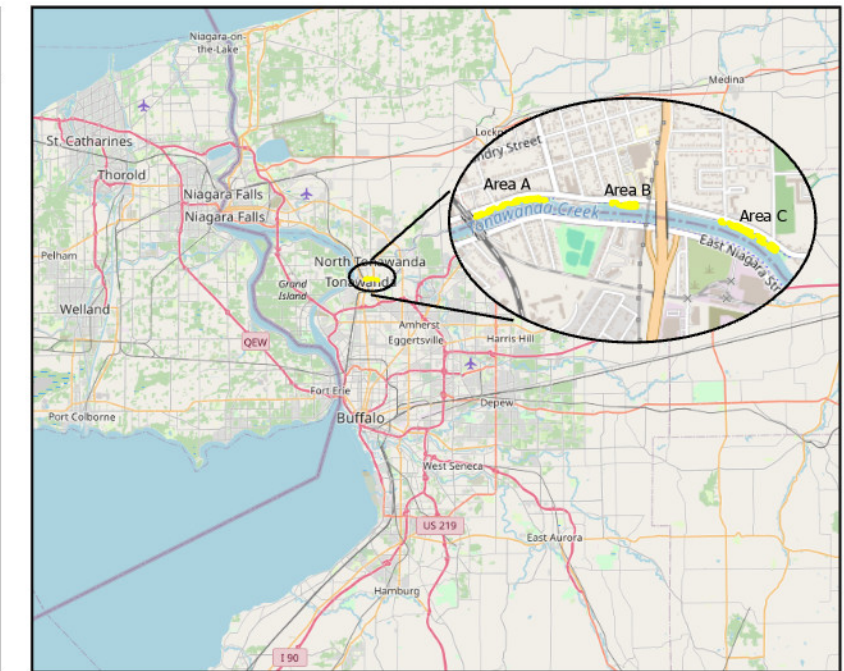
KEY

Planting Zones

-  Supplemental Plantings
-  Meadow Establishment
-  Riparian Reforestation
-  Fenced Emergent Planting
-  Tree Planting

Other Features

-  Project Area
-  Fishing Access Point
-  Mowed Path
-  Signage Locations



Tonawanda Creek Riparian Improvements

Site Plan - Area C

Buffalo Niagara Waterkeeper
721 Main Street
Buffalo, NY 14203



DATE	JANUARY 2026
SHEET #	5 OF 5
SHEET TITLE	TONAWANDA CREEK RIPARIAN IMPROVEMENTS - SITE PLAN